

# Mandiri Global Sharia Equity Dollar (Class A)



## Equity Fund Syariah

NAV/Unit USD 1,648592

Reporting Date

31 March 2026

Effective Statement

S-159/D.04/2016

Effective Date

06 April 2016

Custodian Bank

Bank Citibank

Inception Date

04 August 2016

AUM MGSED-A

USD 32,19 Million

Total AUM MGSED

USD 32,19 Million

Currency

American Dollar (USD)

Pricing Frequency

Daily

Minimum Initial Investment

USD 10.000

Number of Offered Units

2.000.000.000 (Two Billion)

Management Fee

Max. 3% p.a

Custodian Fee

Max. 0,25% p.a

Subscription Fee

Max. 2%

Redemption Fee

Max. 2% (≤ 1 year) 0% (&gt; 1 year)

Switching Fee

Max. 2%

ISIN Code

IDN000237104

Bloomberg Code

MANGSED:J

### Benefits Of Mutual Fund

- Professional management
- Investment value growth
- Investment diversification
- Liquidity or Participation Unit are easy to redeem
- Information transparency

### Main Risk Factor

- Risk of Diminishing of NAV of each participation unit
- Risk of Exchange Rate
- Risk of Liquidity
- Risk of Discontinuity and Liquidation
- Risk of Foreign Securities

### Investment Period



### Risk Period



### Description

MGSED Fund investing in Foreign Sharia Equity listed in Sharia Securities List with Long Term and categorized High Risk. This Mutual fund's Portfolio carries various risks for investor.

### Information on Mutual Fund Ownership

Confirmation letter for subscription, redemption and switching of mutual funds are valid legal proof of mutual fund ownership issued and delivered by the custodian bank. In case there is Securities Ownership (AKSE) facility, Participation Unit Holders could see Mutual Fund ownership through KSEI Akses webpage, <https://akses.ksei.co.id/>.

## About Mandiri Investasi

PT Mandiri Manajemen Investasi (Mandiri Investasi) is a separate subsidiary of PT Mandiri Sekuritas established in October 26, 2004. PT Mandiri Sekuritas is Indonesia's leading investment bank and a subsidiary of PT Bank Mandiri (Persero) Tbk., the country's largest state-owned Bank. Mandiri Investasi and/or its predecessors have been managing investment portfolios since 1993, with Business License Number: No. Kep-11/PM/MI/2004. Mandiri Investasi is one of the Indonesia's largest domestic mutual fund with total assets under management totaling Rp 62,26 Trillion (as of 31 March 2026).

## Custodian Bank

Citibank, N.A. has received approval as a Custodian Bank in the Capital Markets sector based on the Decree of the Chairman of the Capital Market Supervisory Agency No. KEP-91/PM/1991 dated October 19, 1991, therefore registered with and supervised by the Financial Services Authority (OJK).

## Investment Objective

Providing attractive long-term investment rate of return in US Dollar denomination, by investing in foreign Sharia equity securities portfolio listed in Sharia Securities List.

## Investment Policy\*

Equity Sharia Securities	: 80% - 100%
Fixed Income Sharia Securities and/or Money	: 0% - 20%
Market Sharia and/or Sharia Deposit	

From investment portfolio above, RD MGSED will invest with min. 51% of Foreign Sharia Securities  
\*) Excluding cash and cash equivalents

## Portfolio Allocation\*

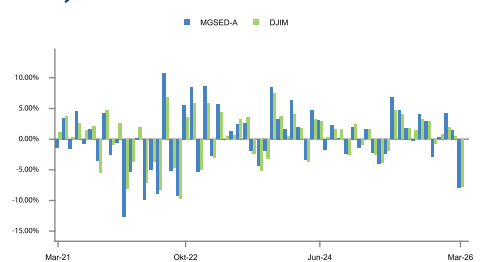
Sharia Equity	: 92,46%
Sharia Deposit	: 0,00%

\*) Excluding cash and cash equivalents

## Fund Performance



## Monthly Return



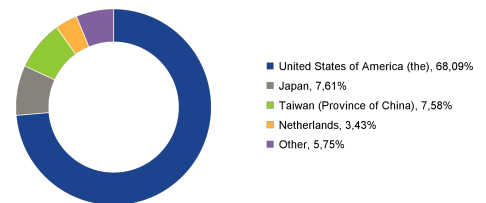
## Top Holdings

(In Alphabetical Order)

Alphabet Inc-CI A	Sharia Equity	4,97%
Amazon.com Inc	Sharia Equity	6,20%
Apple Inc	Sharia Equity	5,63%
ASML Holding NV	Sharia Equity	3,43%
Johnson & Johnson	Sharia Equity	3,17%
Meta Platforms Inc-Class A	Sharia Equity	5,06%
Microsoft Corp	Sharia Equity	5,74%
Nvidia Corp	Sharia Equity	6,45%
Taiwan Semiconductor Manufacturing Co Ltd	Sharia Equity	7,58%
Walmart Inc	Sharia Equity	3,13%

## Country Allocation

(5 Biggest Country)



## Performance - 31 March 2026

	1 Month	3 Months	6 Months	1 Year	3 Years	5 Years	YTD	Since Inception
MGSED-A	: -7,98%	-2,66%	-2,43%	12,43%	33,59%	4,04%	-2,66%	64,86%
Benchmark*	: -7,74%	-4,79%	-0,87%	13,85%	39,62%	34,86%	-4,79%	133,71%

\*Dow Jones Islamic World Index

Benchmark Performance after tax, where capital gain and dividend is received by taxable Mutual Fund in accordance with the applicable corporate tax rate in Indonesia.

Highest Month

(July 2022)

10,69%

Lowest Month

(January 2022)

-12,68%

This Mutual fund had the highest performance of 10,69% in July 2022 and reached the lowest performance of -12,68% in January 2022.

## Market Outlook

Global equity markets traded with heightened volatility in March, as risk appetite weakened amid escalating tensions between the US-Israel and Iran. Attacks on oil and gas infrastructure, combined with spillover risks from a potential closure of the Strait of Hormuz and continued uncertainty around the Iran conflict, drove a sharp rise in oil prices and pushed inflation expectations back above 5%. At the same time, concerns over stress in the US private credit market and recent economic data releases further weighed on investor sentiment. The Federal Reserve kept its policy rate unchanged at 3.50%-3.75% for a second consecutive meeting in March 2026, adopting a wait-and-see stance. While economic activity remains relatively solid, inflation is still elevated and labor market conditions are softening. The uncertainty surrounding the Iran conflict adds complexity to the policy outlook. The Fed continues to project one rate cut in 2026 and another in 2027, in line with its December projections, although the timing remains unclear. Meanwhile, market expectations have shifted toward no near-term rate changes or at most one rate cut in 2026 (CME FedWatch). Inflation remains persistent, with core CPI at 0.3% MoM and 2.5% YoY in February, and core PCE—the Fed's preferred measure—at 0.4% MoM and 3.1% YoY in January, well above the 2% target and at its highest level in two years, even before fully reflecting the recent oil price surge. From a macro perspective, US labor market conditions have begun to soften. February nonfarm payrolls declined by 133,000 (vs. +59,000 expected), while the unemployment rate rose to 4.4% from 4.3%. Despite this, ISM PMI data still indicates expansion in both manufacturing and services, suggesting continued, albeit moderating, economic growth. This is further reflected in the downward revision of Q4 GDP to 0.7% (annualized) from 1.4%, significantly below the previous quarter's 4.4%, driven by weaker contributions from exports, consumption, government spending, and investment.

## Fund Bank Account

Citibank N.A., Indonesia  
RD SYARIAH MANDIRI GLB SHR EQT DR  
0-810-437-502

## DISCLAIMER

INVESTMENT IN MUTUAL FUND CONTAIN RISK. PRIOR TO INVESTING IN MUTUAL FUND, POTENTIAL INVESTOR MUST READ AND UNDERSTAND THE PROSPECTUS. PAST PERFORMANCE DOES NOT GUARANTEE / REFLECT THE FUTURE PERFORMANCE OF THE FUND. FINANCIAL SERVICE AUTHORITY (OJK) NEITHER GIVE ANY STATEMENT TO APPROVE OR REJECT THE SECURITIES NOR EXPRESS THE ACCURACY OR ADEQUACY OF THE CONTENTS OF MUTUAL FUND'S PROSPECTUS. ANY CONTRADICTORY STATEMENT SHALL BE LEGAL BREACH. MUTUAL FUND IS A CAPITAL MARKET PRODUCT AND NOT A PRODUCT PUBLISHED BY SELLING AGENT/BANKS THE SELLING AGENT OF THE FUND SHALL NOT RESPONSIBLE FOR ANY CLAIM AND RISKS OF THE MANAGEMENT OF THE MUTUAL FUND'S PORTFOLIO BY INVESTMENT MANAGER.

This product information summary does not replace the Mutual Fund Prospectus and prepared by PT Mandiri Manajemen Investasi only for information needs and does not constitute an offer to buy or sell. All information contained in this document is presented correctly. If necessary, investors are advised to seek professional opinion before making an investment decision. Past performance is not necessarily a guide to future performance and is not also an estimate made to give an indication regarding future performance or trends.

The Dow Jones Islamic Market Index is a product of S&P Dow Jones Indices LLC, its affiliates and/or their third party licensors ("SPDJI"), and has been licensed of use by PT Mandiri Manajemen Investasi. S&P® is a registered trademark of Standard & Poor's Financial Services LLC ("S&P"); Dow Jones® is a registered trademark of Dow Jones Trademark Holdings LLC ("Dow Jones"); and these trademarks have been licensed for use by SPDJI and sublicensed for certain purposes by PT Mandiri Manajemen Investasi. Mandiri Global Sharia Equity Dollar is not sponsored, endorsed, sold promoted by SPDJI, Dow Jones, S&P, their respective affiliates or their third party licensors and none of such parties make any representation regarding the advisability of investing in such product(s) nor do they have any liability for any errors, omissions, or interruptions of the Dow Jones Islamic Market. JP Morgan Asset Management (singapore) Limited or JPMAM is not the issuer of Mandiri Global Sharia Equity Dollar and has or assumes no responsibility for the management of the fund or this document. The Technical Adviser's involvement in the fund does not create any actual or potential liability on the part of the Technical adviser to any party (including any unitholders) other than the Investment Manager pursuant to the term of the Investment Advisory Agreement. Unitholders shall not have any grounds of action or rights of recourse, directly or indirectly, to the Technical adviser.

PT Mandiri Manajemen Investasi is licensed and supervised by the Indonesia Financial Services Authority (Otoritas Jasa Keuangan) and every product offering is conducted by officers who are registered and supervised by the Indonesia Financial Services Authority (Otoritas Jasa Keuangan)

## PT Mandiri Manajemen Investasi

Menara Mandiri 2 Lantai 15, Jl. Jend. Sudirman Kav. 54-55  
Jakarta 12190, Indonesia Call Center: (021) 526 3505



Mandiri investasi



Mandiri.investasi



Mandiri Investasi

Further information and Fund Prospectus can be accessed through our site [www.mandiri-investasi.co.id](http://www.mandiri-investasi.co.id)

