

Mandiri Investa Dana Obligasi Seri II (Class A)

Fixed Income Fund

NAV/Unit IDR 1.678,26

Reporting Date

30 April 2026

Effective Statement

S-3188/PM/2004

Effective Date

14 October 2004

Custodian Bank

Deutsche Bank AG

Inception Date

08 December 2004

AUM MIDO2-A

IDR 344,62 Billion

Total AUM MIDO2

IDR 368,80 Billion

Currency

Indonesian Rupiah (IDR)

Pricing Frequency

Daily

Minimum Initial Investment

IDR 10.000

Number of Offered Units

5.000.000.000 (Five Billion)

Management Fee

Max. 3% p.a

Custodian Fee

Max. 0,25% p.a

Subscription Fee

Max. 2%

Redemption Fee

Max. 1%

Switching Fee

Max. 1%

ISIN Code

IDN000004009

Bloomberg Code

MANIDOA : IJ

Benefits Of Mutual Fund

- Professional Management
- Investment Diversification
- Investment Value Growth Potential
- Easy investment disbursement

Main Risk Factor

- Risk of Changes in Economic and Political
- Risk of Default
- Risk of Liquidity
- Risk of Dissolution and Liquidation

Investment Period



Risk Period



Description

MIDO 2 Fund Investing in Bonds Instrument with Medium Term and categorized Low - Medium Risk. This Mutual fund's Portfolio carries various risks for investors.

Information on Mutual Fund Ownership

Confirmation letter for subscription, redemption and switching of mutual funds are valid legal proof of mutual fund ownership issued and delivered by the custodian bank. In case there is Securities Ownership (AKSES) facility, Participation Unit Holders could see Mutual Fund ownership through this page <https://akses.ksei.co.id/>.

About Mandiri Investasi

PT Mandiri Manajemen Investasi (Mandiri Investasi) is a separate subsidiary of PT Mandiri Sekuritas established in October 26, 2004. PT Mandiri Sekuritas is Indonesia's leading investment bank and a subsidiary of PT Bank Mandiri (Persero) Tbk., the country's largest state-owned Bank. Mandiri Investasi and/or its predecessors have been managing investment portfolios since 1993, with Business License Number: No. Kep-11/PM/MI/2004. Mandiri Investasi is one of the Indonesia's largest domestic mutual fund, with total assets under management totaling Rp. 65,40 Trillion (as of 30 April 2026).

Custodian Bank

Deutsche Bank AG Jakarta Branch has a license from the OJK to operate as a custodian in the Capital Market based on BAPEPAM Chairman Decision No. Kep-07/PM/1994 dated January 19, 1994 and therefore registered with and supervised by the Financial Services Authority (OJK).

Investment Objective

To provide a relatively stable investment return through investment in Debt Securities and to reduce risk level by selectively appoint the commercial paper issuer.

Investment Policy*

Debt Securities (Government, Other Bonds)
Bank of Indonesia Certificate, Time Deposits, : 100%
and Certificates of Deposit
Money Market : Max. 95%

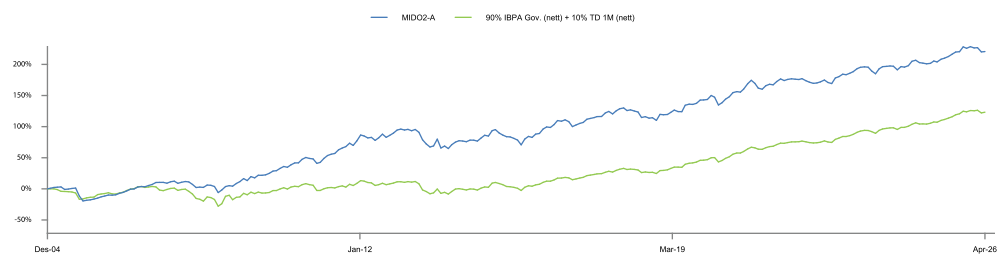
*) excluding deposit, cash and cash equivalent and may invest up to a maximum of 15% in Foreign Securities

Portfolio Allocation*

Bonds : 89,87%
Deposit : 9,08%

*) excluding cash and cash equivalents

Fund Performance

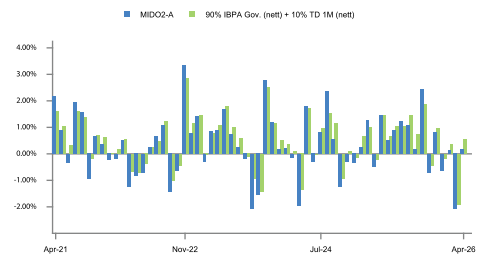


Top Holdings

(In Alphabetical Order)

Instrument	Type	Weight
Bank Tabungan Negara (Persero) Tbk.	Deposit	4,07%
FR0059	Bonds	5,46%
FR0064	Bonds	4,05%
FR0089	Bonds	4,03%
FR0090	Bonds	5,37%
FR0091	Bonds	8,03%
FR0100	Bonds	4,01%
FR0108	Bonds	9,49%
FR0109	Bonds	9,80%
PBS034	Bonds	7,06%

Monthly Return



Performance - 30 April 2026

	1 Month	3 Months	6 Months	1 Year	3 Years	5 Years	YTD	Since Inception
MIDO2-A	: 0,17%	-1,78%	-2,30%	3,97%	11,21%	20,65%	-2,40%	220,64%
Benchmark*	: 0,54%	-1,00%	-0,68%	6,27%	19,01%	34,36%	-1,19%	123,22%

*Benchmark Description:

Since February 2024, Benchmark change to 90% IBPA Government (nett) + 10% TD 1M (nett)
Since September 2017 - January 2024 Benchmark change to 90% Bloomberg Indonesia Local Sovereign Index + 10% TD 1 Month (nett)
Since January 2016 - August 2017 Benchmark using 70% Bloomberg Indonesia Sovereign Index + 30% TD 3 Month
Since November 2004 - December 2016 Benchmark using MSGBI
This Total Return data is the result of the calculation of the NAV/UP simulation on Mutual Funds with a profit sharing feature for investors

Highest Month

(October 2013)

6,45%

This Mutual fund had the highest performance of 6,45% in October 2013 and reached the lowest performance of -12,78% in August 2005.

Lowest Month

(August 2005)

-12,78%

Market Outlook

In April 2026, the Indonesian bond market traded in a volatile but range-bound fashion, with the INDOGB10Y yield opening near March's close of 6.87% and ending the month at approximately 6.88%, masking significant intra-month swings. The 10-year yield briefly consolidated to around 6.58% around April 22 before selling pressure resumed. External headwinds intensified through the month. The ongoing Middle East war continued to disrupt Strait of Hormuz shipping, driving oil prices sharply higher. Brent crude surged more than 6% to close at USD 118.03 per barrel on April 29, the highest level since June 2022, after President Trump announced a continued naval blockade on Iran. The Fed held its benchmark rate steady at 3.50%-3.75% for a third consecutive meeting, with an unusually divided 8-4 vote as hawkish dissenters pushed to remove the easing bias from the statement, reinforcing the higher-for-longer narrative. The Rupiah bore the brunt of these pressures. The currency breached the psychological Rp17,300 level on April 23 as US-Iran peace talks broke down, before closing at a record low of Rp17,326 per USD on April 29. At the April 21-22 RDG BI, Bank Indonesia held the BI Rate at 4.75% for a seventh consecutive meeting, a unanimous market expectation, maintaining the Deposit Facility at 3.75% and Lending Facility at 5.50%. BI kept its 2026 GDP growth forecast at 4.9%-5.7%, while noting Q1 foreign portfolio investment recorded net outflows of USD 1.7 billion. On a brighter note, early Q2 through April 20 saw net inflows of USD 1.9 billion into SRBI and SBN, supported by higher instrument yields. Non-resident SBN ownership continued to erode, falling to 12.58% of tradeable outstanding by April 10, the lowest since November 2006. Sentiment was further weighed by MSCI's April 20 decision to maintain its freeze on Indonesian equity rebalancing for May 2026, including the removal of BREN and DSSA under the High Shareholding Concentration classification.

Fund Bank Account

Deutsche Bank AG
RD MANDIRI INVESTA DANA OBLIGASI SERI II
0098434-009

PT Bank Mandiri (Persero). Tbk. Cabang Bursa Efek Indonesia, Jakarta
REKSA DANA MANDIRI INVESTA DANA OBLIGASI SERI II
104-000-441-3246

DISCLAIMER

INVESTMENT IN MUTUAL FUND CONTAIN RISK. PRIOR TO INVESTING IN MUTUAL FUND, POTENTIAL INVESTOR MUST READ AND UNDERSTAND THE PROSPECTUS. PAST PERFORMANCE DOES NOT GUARANTEE / REFLECT THE FUTURE PERFORMANCE OF THE FUND. FINANCIAL SERVICE AUTHORITY (OJK) NEITHER GIVE ANY STATEMENT TO APPROVE OR REJECT THE SECURITIES NOR EXPRESS THE ACCURACY OR ADEQUACY OF THE CONTENTS OF MUTUAL FUND'S PROSPECTUS. ANY CONTRADICTORY STATEMENT SHALL BE LEGAL BREACH. MUTUAL FUND IS A CAPITAL MARKET PRODUCT AND NOT A PRODUCT PUBLISHED BY SELLING AGENT/BANKS THE SELLING AGENT OF THE FUND SHALL NOT RESPONSIBLE FOR ANY CLAIM AND RISKS OF THE MANAGEMENT OF THE MUTUAL FUND'S PORTFOLIO BY INVESTMENT MANAGER.

This product information summary does not replace the Mutual Fund Prospectus and prepared by PT Mandiri Manajemen Investasi only for information needs and does not constitute an offer to buy or sell. All information contained in this document is presented correctly. If necessary, investors are advised to seek professional opinion before making an investment decision. Past performance is not necessarily a guide to future performance and is not also an estimate made to give an indication regarding future performance or trends.

PT Mandiri Manajemen Investasi is licensed and supervised by the Indonesia Financial Services Authority (Otoritas Jasa Keuangan) and every product offering is conducted by officers who are registered and supervised by the Indonesia Financial Services Authority (Otoritas Jasa Keuangan)

PT Mandiri Manajemen Investasi

Menara Mandiri 2 Lantai 15, Jl. Jend. Sudirman Kav. 54-55
Jakarta 12190, Indonesia Call Center: (021) 526 3505



Mandiri investasi



Mandiri.investasi



Mandiri Investasi

Further information and Fund Prospectus can be accessed through our site www.mandiri-investasi.co.id

